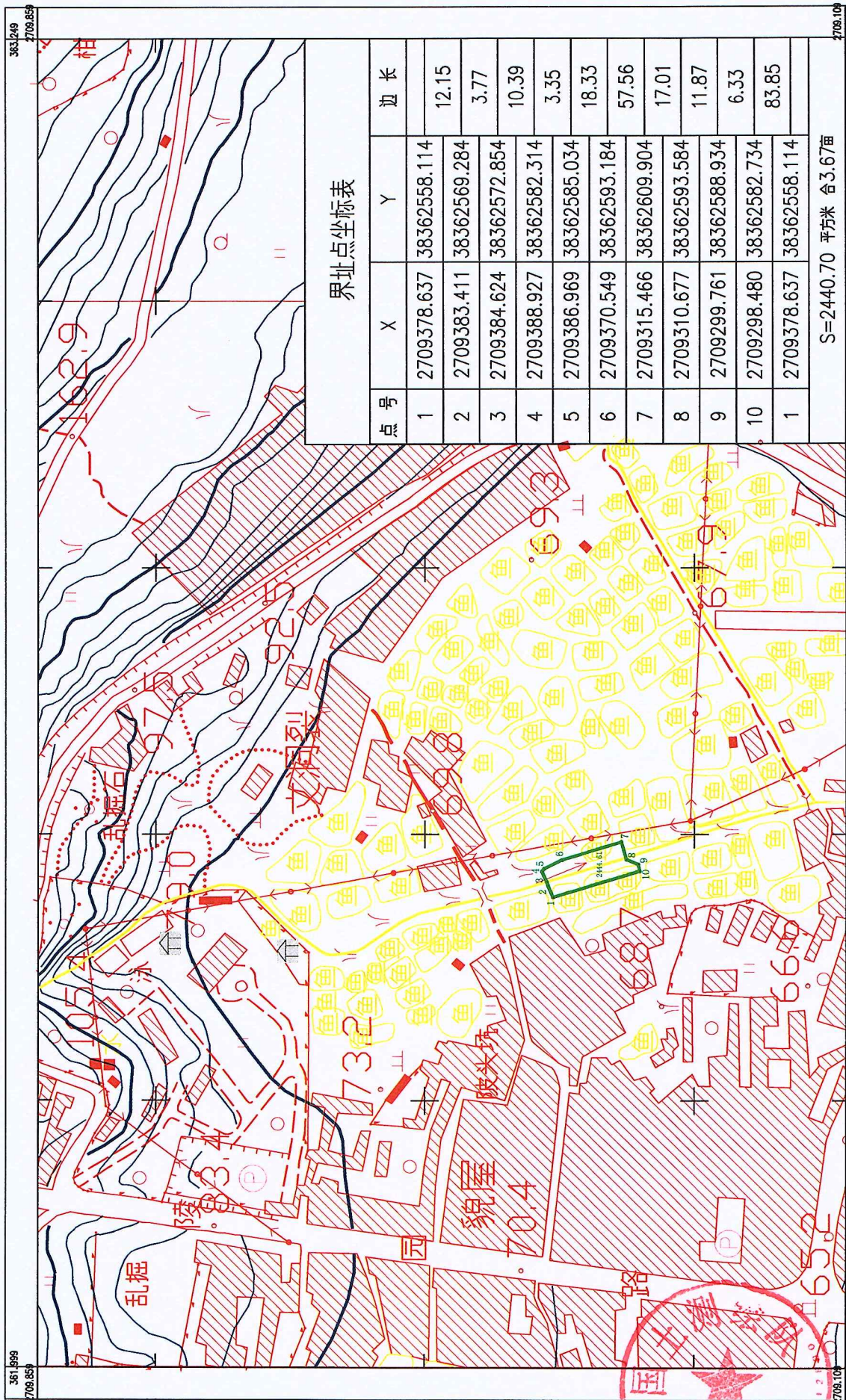
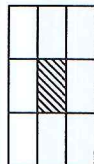


阳山县2019年度第二批城镇建设用地

2020H005

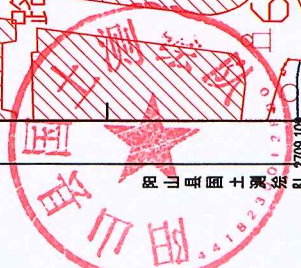
2709.1-362.0



界址点坐标表

点号	X	Y	边长
1	2709378.637	38362558.114	12.15
2	2709383.411	38362569.284	3.77
3	2709384.624	38362572.854	10.39
4	2709388.927	38362582.314	3.35
5	2709386.969	38362585.034	18.33
6	2709370.549	38362593.184	57.56
7	2709315.466	38362609.904	17.01
8	2709310.677	38362593.584	11.87
9	2709299.761	38362588.934	6.33
10	2709298.480	38362582.734	83.85
1	2709378.637	38362558.114	

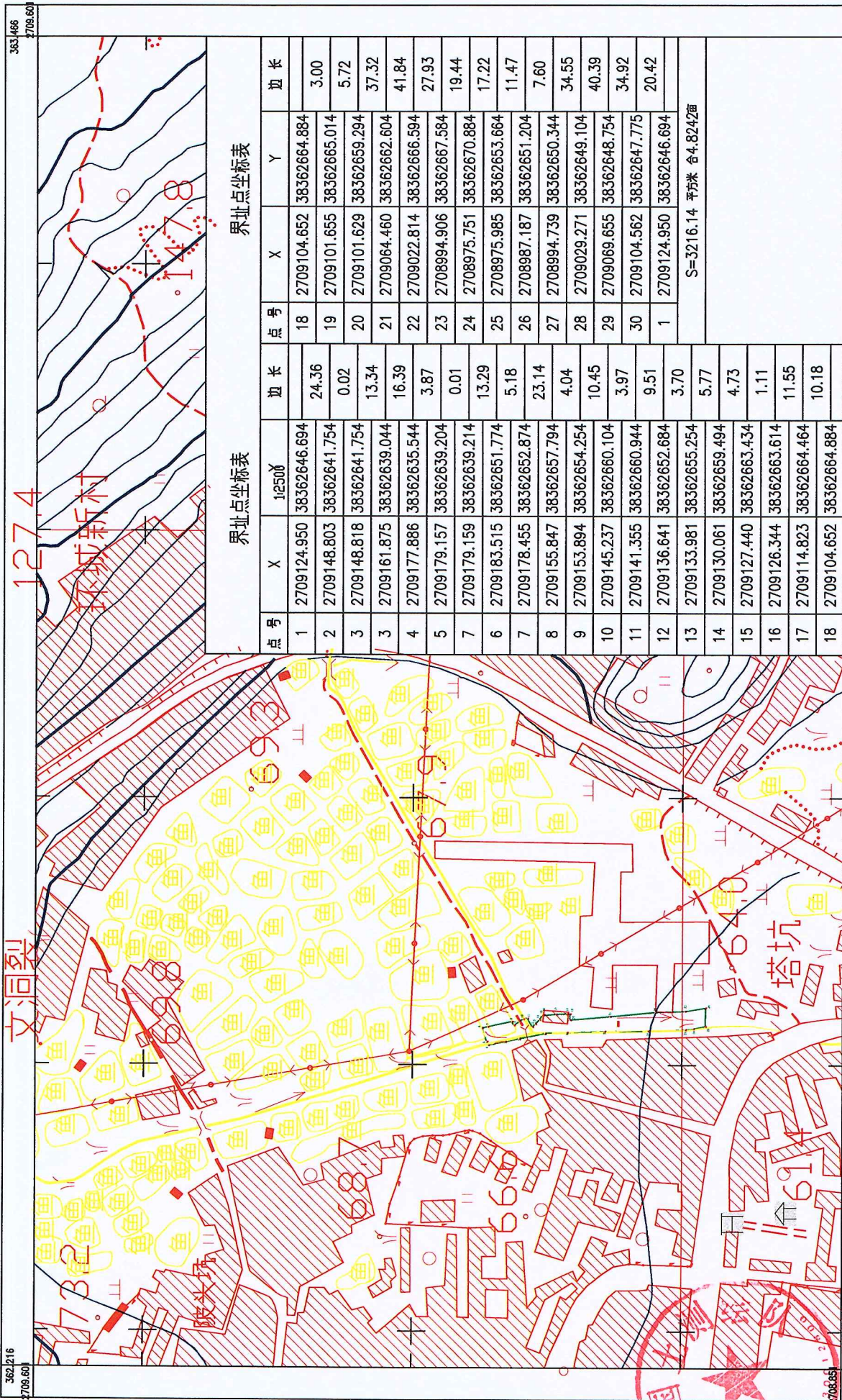
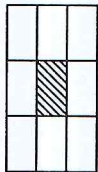
S=2440.70 平方米 合3.67亩



阳山县2019年度第二批城镇建设用地

2708.9-362.2

2020H006



界址点坐标表

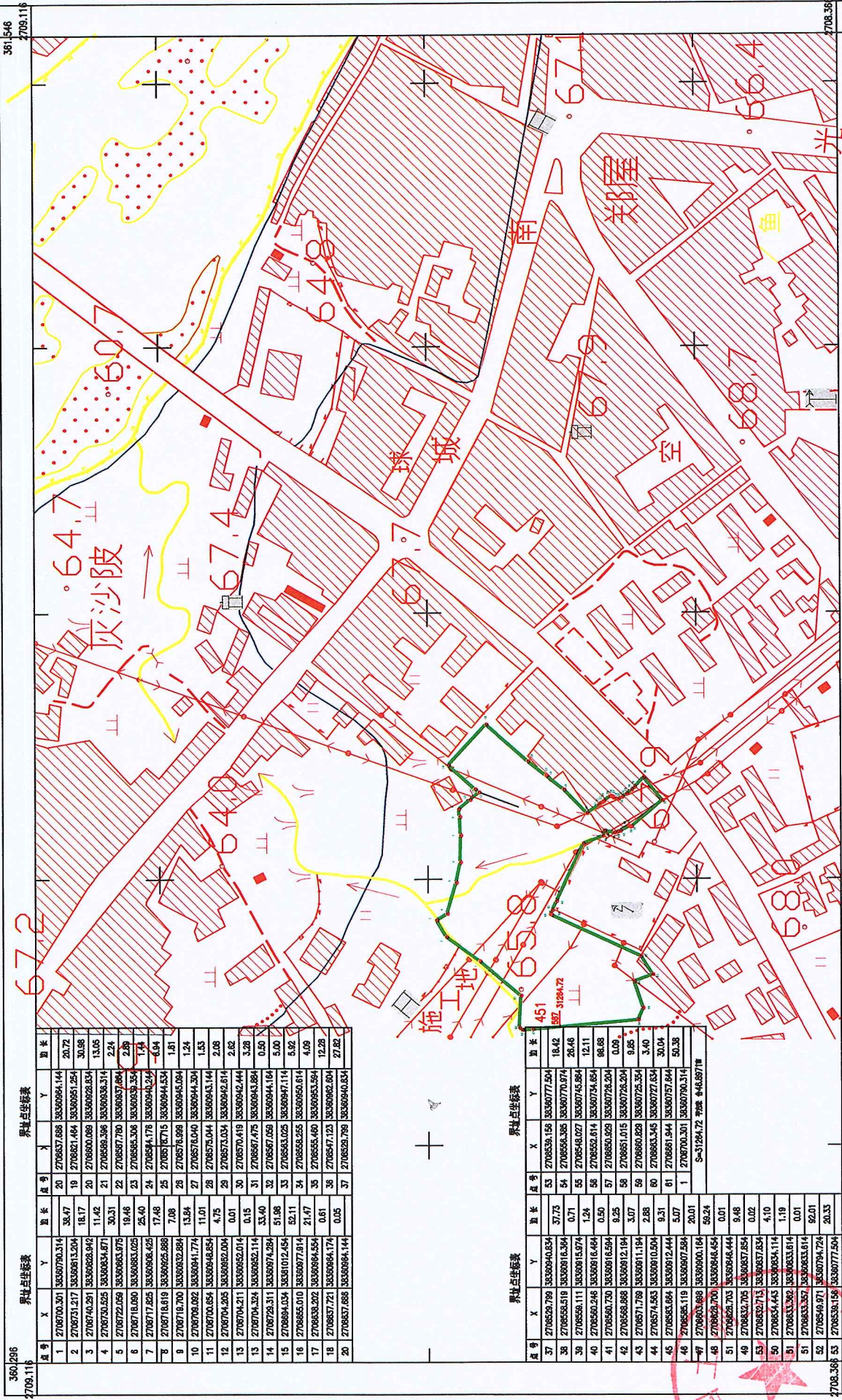
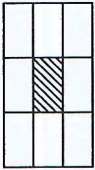
点号	X	Y	边长	点号	X	Y	边长
1	2709124.950	38362646.694	24.36	18	2709104.652	38362664.884	3.00
2	2709148.803	38362641.754	0.02	19	2709101.655	38362665.014	5.72
3	2709148.818	38362641.754	13.34	20	2709101.629	38362659.294	37.32
3	2709161.875	38362639.044	16.39	21	2709084.460	38362662.604	41.84
4	2709177.886	38362635.544	3.87	22	2709022.814	38362666.594	27.93
5	2709179.157	38362639.204	0.01	23	2708994.906	38362667.584	19.44
7	2709179.159	38362639.214	13.29	24	2708975.751	38362670.884	17.22
6	2709183.515	38362651.774	5.18	25	2708975.985	38362653.664	11.47
7	2709178.455	38362652.874	23.14	26	2708987.187	38362651.204	7.60
8	2709155.847	38362657.794	4.04	27	2708994.739	38362650.344	34.55
9	2709153.894	38362654.254	10.45	28	2709029.271	38362649.104	40.39
10	2709145.237	38362660.104	3.97	29	2709069.655	38362648.754	34.92
11	2709141.355	38362660.944	9.51	30	2709104.562	38362647.775	20.42
12	2709136.641	38362652.684	3.70	1	2709124.950	38362646.694	
13	2709133.981	38362655.254	5.77	S=3216.14 平方米 合4.824亩			
14	2709130.061	38362659.494	4.73				
15	2709127.440	38362663.434	1.11				
16	2709126.344	38362663.614	11.55				
17	2709114.823	38362664.464	10.18				
18	2709104.652	38362664.884					



阳山县2019年度第二批城镇建设用地

2020H007

2708.4-360.3



界址点坐标表				界址点坐标表			
序号	X	Y	距离	序号	X	Y	距离
1	2708700.301	3630970.314	38.47	20	2708537.688	3630984.144	20.72
2	2708731.217	3630981.324	18.17	19	2708281.484	3630985.124	30.98
3	2708740.291	3630986.942	11.42	20	2708900.059	3630982.834	13.05
4	2708730.525	3630983.671	30.31	21	2708596.396	3630983.314	2.24
5	2708722.059	3630983.979	19.48	22	2708587.780	3630983.884	2.89
6	2708718.090	3630983.025	25.40	23	2708565.308	3630983.354	1.74
7	2708717.625	3630982.425	17.48	24	2708594.178	3630984.244	-6.94
8	2708718.819	3630982.588	7.08	25	2708518.715	3630984.534	1.81
9	2708718.700	3630982.828	13.84	26	2708576.988	3630984.094	1.24
10	2708700.854	3630984.174	11.01	27	2708578.040	3630984.304	1.83
11	2708700.854	3630984.854	4.75	28	2708575.044	3630984.144	2.08
12	2708704.025	3630982.004	0.01	29	2708573.034	3630984.814	2.62
13	2708704.324	3630982.014	0.15	30	2708570.419	3630984.444	3.28
14	2708728.311	3630987.428	33.40	31	2708567.475	3630984.884	0.50
15	2708694.034	3630987.814	51.98	32	2708567.059	3630984.164	5.00
16	2708694.034	3630987.814	21.47	33	2708565.025	3630984.714	4.92
17	2708693.292	3630984.534	0.61	34	2708558.255	3630985.814	4.09
18	2708637.721	3630984.174	0.85	35	2708558.480	3630985.594	12.28
19	2708637.688	3630984.144		36	2708547.123	3630982.004	27.82
20	2708637.688	3630984.144		37	2708529.798	3630980.834	

界址点坐标表				界址点坐标表			
序号	X	Y	距离	序号	X	Y	距离
37	2708529.798	3630980.834	37.73	53	2708538.158	3630777.504	18.42
38	2708535.519	3630981.634	0.71	54	2708550.385	3630770.974	26.48
39	2708559.111	3630981.574	1.24	55	2708548.027	3630745.884	12.11
40	2708560.246	3630981.664	0.50	56	2708552.614	3630734.854	86.68
41	2708560.730	3630981.654	9.25	57	2708650.929	3630728.204	0.09
42	2708568.868	3630982.194	3.07	58	2708651.015	3630728.204	9.85
43	2708571.778	3630981.194	2.88	59	2708660.828	3630725.354	3.40
44	2708574.653	3630981.004	5.07	60	2708663.345	3630727.634	30.04
45	2708553.684	3630982.444	20.01	61	2708661.944	3630757.844	50.38
46	2708563.119	3630980.758	39.24	1	2708700.201	3630970.314	
47	2708562.700	3630984.654	0.01				
48	2708562.700	3630984.654	9.48				
49	2708632.765	3630987.854	0.02				
50	2708632.713	3630987.854	4.10				
51	2708634.443	3630984.114	1.19				
52	2708633.360	3630983.614	0.01				
53	2708633.350	3630983.614	92.01				
54	2708634.971	3630974.724	20.33				
55	2708634.971	3630974.724					



2020年2月27日
国家大地2000坐标系, 1985国家高程基准, 高程为米

1:2500

360.296

2708.368