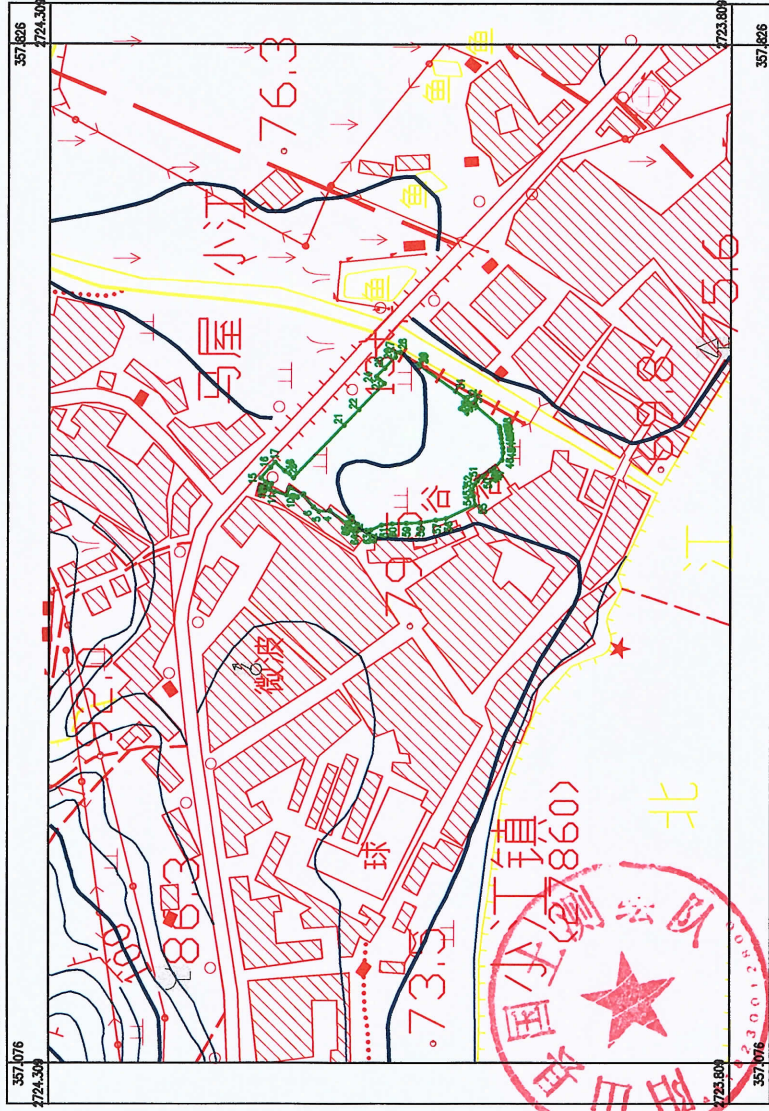


# 阳山县2019年度第一批城镇建设用地

20190364

2723.8-357.1



2019年9月  
国家2000大地坐标系, 高斯投影

1:2500

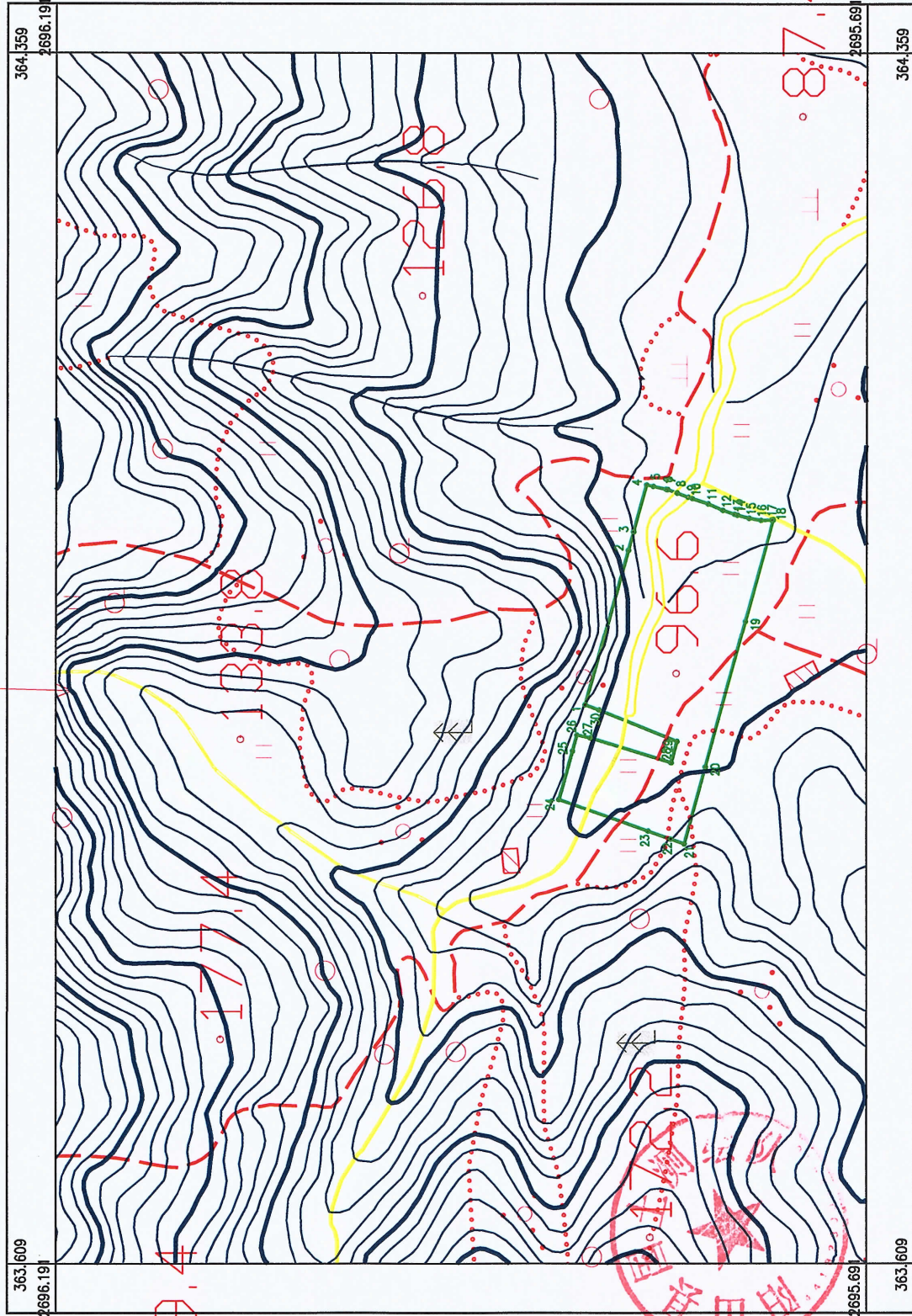
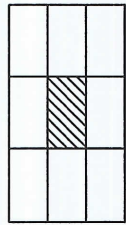
界址点坐标表				界址点坐标表				界址点坐标表			
点号	X	Y	面积	点号	X	Y	面积	点号	X	Y	面积
1	2724084.075	3835789.987	0.63	19	2724133.435	3835782.882	7.58	37	2723983.710	3835767.287	23.17
2	2724084.447	3835789.185	0.00	20	2724127.392	3835782.281	53.47	38	2723976.217	3835761.059	1.66
3	2724084.448	3835789.181	3.68	21	2724080.443	3835786.137	16.16	39	2723976.078	3835768.440	2.45
4	2724088.740	3835788.373	17.55	22	2724078.278	3835787.618	28.89	40	2723975.874	3835767.003	1.75
5	2724108.765	3835788.926	8.02	23	2724080.831	3835788.912	7.80	41	2723975.320	3835765.342	2.88
6	2724108.776	3835788.891	5.00	24	2724088.828	3835788.124	8.85	42	2723975.043	3835762.460	3.45
7	2724127.711	3835789.676	11.56	25	2724080.440	3835770.450	11.15	43	2723974.582	3835764.064	3.69
8	2724120.230	3835789.453	0.53	26	2724052.736	38357712.507	3.27	44	2723973.844	3835764.555	3.70
9	2724119.857	3835781.301	11.08	27	2724052.388	38357715.783	3.39	45	2723973.860	3835764.1863	5.39
10	2724132.202	38357810.482	9.40	28	2724049.035	38357718.172	15.62	46	2723974.306	3835763.6508	8.58
11	2724141.283	38357810.482	3.60	29	2724038.271	38357702.100	1.38	47	2723980.882	3835763.0188	1.37
12	2724143.486	38357818.869	4.10	30	2724035.154	38357705.350	32.79	48	2723981.223	38357629.438	0.02
13	2724147.450	38357822.953	10.41	31	2724008.610	38357857.096	6.32	49	2723982.851	38357628.301	2.05
14	2724151.078	38357822.953	4.99	32	2724001.846	38357887.075	5.48	50	2723982.851	38357624.146	4.85
15	2724144.118	38357830.882	9.25	33	2724002.075	38357882.188	5.48	51	2723982.815	38357621.049	3.17
16	2724140.781	38357834.402	0.59	34	2724005.049	38357874.283	5.48	52	2723984.511	38357616.514	4.81
17	2724133.904	38357828.217	0.59	35	2724000.354	38357870.857	5.48	53	2723988.405	38357614.314	4.52
18	2724133.435	38357827.882	0.59	36	2723997.390	38357875.456	3.76	54	2723985.585	38357608.871	0.01
19	2724133.435	38357827.882	0.59	37	2723983.710	38357876.287	3.76	55	2723985.583	38357609.882	0.01



# 阳山县2019年度第一批城镇建设用地

2019Y365

2695.7-363.6



364.359

2696.191

364.359

2695.691

点号	界址点坐标表		边长	点号	界址点坐标表		边长
	X	Y			X	Y	
1	2695981.602	38394071.596	99.04	16	2695733.910	38394168.186	6.87
2	2695835.434	38394167.087	11.78	17	2695747.040	38394168.296	0.01
3	2695932.315	38394179.051	30.04	18	2695747.031	38394168.296	0.82
4	2695824.366	38394208.016	0.03	19	2695746.216	38394168.365	0.01
5	2695824.356	38394208.045	0.01	20	2695746.218	38394168.355	65.19
6	2695824.365	38394208.047	0.01	21	2695733.302	38394123.448	93.38
7	2695824.364	38394208.052	0.01	22	2695787.775	38394033.328	46.36
8	2695824.356	38394208.050	4.26	23	2695800.712	38393965.692	8.90
9	2695820.198	38394207.118	8.15	24	2695809.093	38393988.676	14.76
10	2695812.247	38394205.335	1.09	25	2695822.988	38393983.627	58.22
11	2695811.180	38394205.096	6.22	26	2695877.843	38394013.157	31.04
12	2695805.353	38394202.923	7.09	27	2695889.628	38394043.090	10.10
13	2695788.710	38394200.446	2.85	28	2695868.655	38394062.832	8.25
14	2695796.006	38394199.537	10.08	29	2695856.676	38394051.148	52.43
15	2695786.450	38394198.325	9.93	30	2695808.727	38394035.848	13.50
16	2695777.590	38394192.316	7.69	1	2695805.246	38394048.891	51.87
17	2695770.075	38394188.652	1.89	2	2695853.320	38394068.358	9.08
18	2695768.280	38394189.246	7.30	3	2695861.605	38394071.596	
19	2695761.200	38394187.456	7.40	4	S=15598.30 方位角 423.3974#		
20	2695753.910	38394186.186					

2019年9月  
国家2000大地坐标系, 等高距 米

1:2500

阳山县国土测绘队